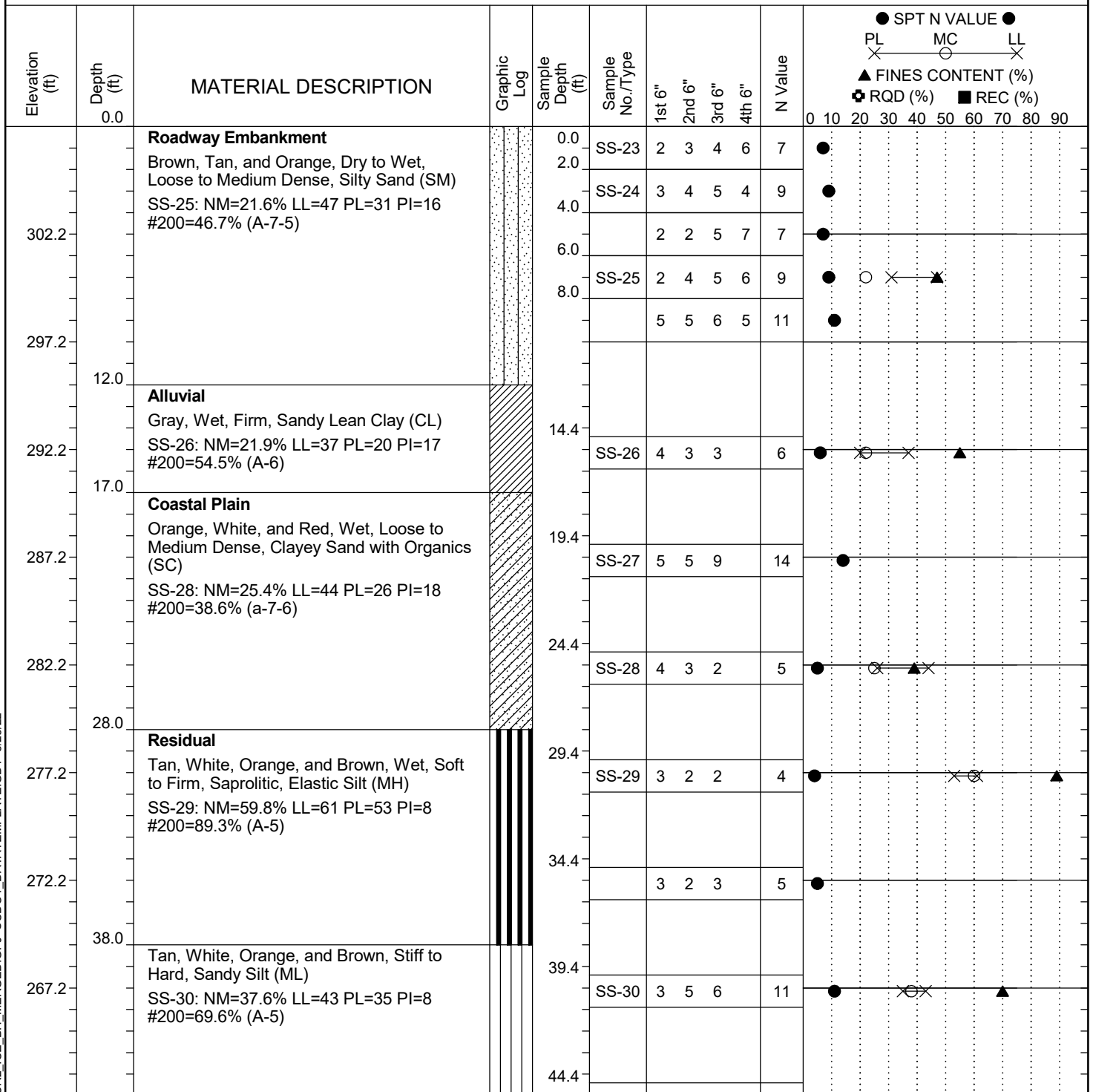


Project ID: P039719				County: Richland		Boring No.: G-108				
Site Description:		Carolina Crossroads Phase 2					Route:	Ramp		
Eng./Geo.: C. McIlroy		Boring Location:		395+85		Offset:	36 LT	Alignment:	RAMPF	
Elev.:	307.2 ft	Latitude:	34.03923212	Longitude:	-81.09603626	Date Started:		4/28/2022		
Total Depth:		70.2 ft	Soil Depth:	70.2 ft	Core Depth:	N/A ft	Date Completed:		4/28/2022	
Bore Hole Diameter (in):		2.25	Sampler Configuration		Liner Required:		Y (N)	Liner Used:		Y (N)
Drill Machine:		D-50 #439	Drill Method:	RW	Hammer Type:		Automatic	Energy Ratio:		90.8%
Core Size:		N/A	Driller:	R. Cassell	Groundwater:	TOB	N/A	24HR	19.1 ft	


LEGEND
Continued Next Page

SAMPLER TYPE			DRILLING METHOD	
SS - Split Spoon	NQ - Rock Core, 1-7/8"		HSA - Hollow Stem Auger	RW - Rotary Wash
UD - Undisturbed Sample	CU - Cuttings		CFA - Continuous Flight Augers	RC - Rock Core
AWG - Rock Core, 1-1/8"	CT - Continuous Tube		DC - Driving Casing	